



General Certificate of Secondary Education

Centre Number

--	--	--	--	--

Candidate Number

--	--	--	--	--

Home Economics: Child Development

Unit 1
Parenthood, Pregnancy and
the Newborn Baby



[GCD11]
Assessment

GCD11

TIME

1 hour 15 minutes.

Assessment Level of Control:

Tick the relevant box (✓)

Controlled Conditions	
Other	

INSTRUCTIONS TO CANDIDATES

Write your Centre Number and Candidate Number in the spaces provided at the top of this page.

You must answer the questions in the spaces provided.

Do not write outside the boxed area on each page or on blank pages.

Complete in black ink only. **Do not write with a gel pen.**

Answer **all eight** questions.

INFORMATION FOR CANDIDATES

The total mark for this paper is **75**.

Figures in brackets printed down the right-hand side of pages indicate the marks awarded to each question or part question.

Quality of written communication will be assessed in Questions **7** and **8**.



1 Read the following statements and tick the box beside each correct answer.

Tick [✓] only **one** box for each statement.

(a) The average weight of a newborn baby is:

A 3.5 kg

B 9.5 kg

C 20 kg

D 40 kg

[1]

(b) In the menstrual cycle, ovulation usually happens on:

A Day 1

B Day 14

C Day 28

D Day 30

[1]

(c) IVF and GIFT are possible treatments for:

A rubella

B infertility

C pain relief

D oedema

[1]



(d) The milk-producing hormone is called:

A oxytocin

B prolactin

C oestrogen

D fibre

[1]

(e) The egg/ovum is produced in the:

A uterus

B vagina

C ovary

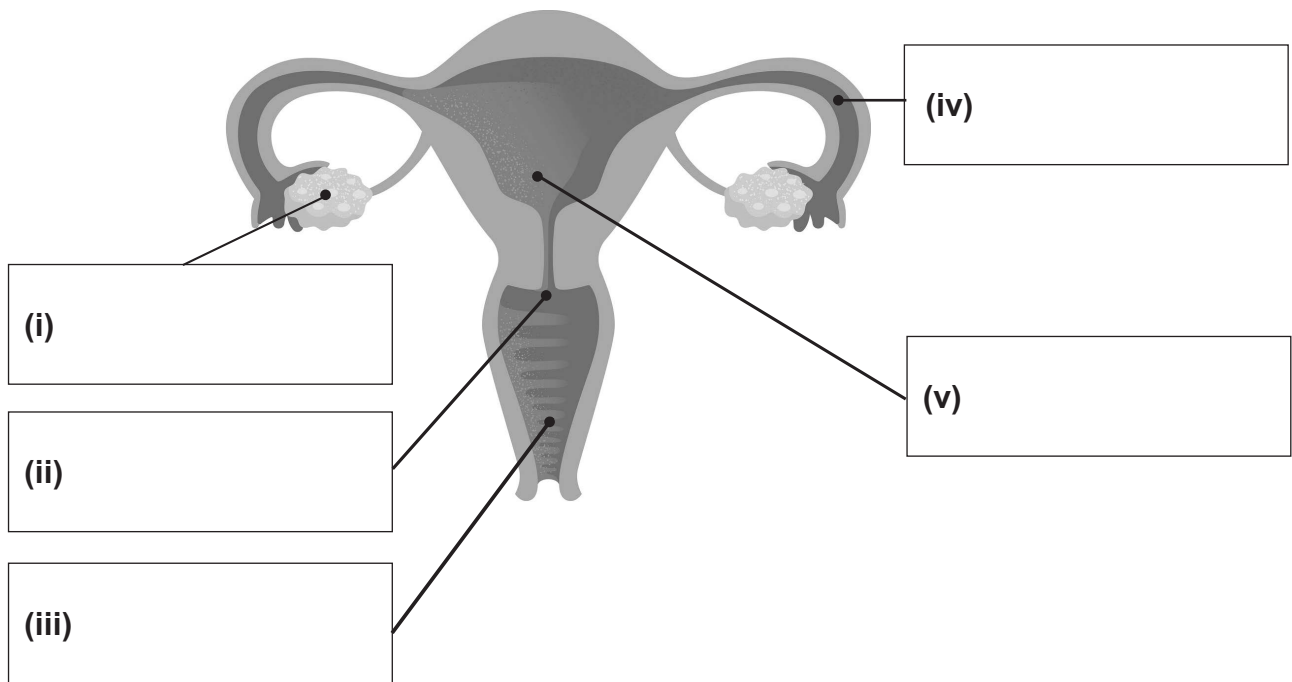
D urethra

[1]



2 (a) Label the diagram of the female reproductive system.

[5]



© Getty Images

(b) Write down **two** possible methods of family planning.

1. _____
2. _____ [2]

(c) Explain what happens during conception.

_____ [3]



(d) Describe the development of the fetus in the womb at week 14.



© Getty Images

[2]



3 (a) Discuss the possible effects of smoking on the unborn baby.

[2]

(b) Explain why the following tests/checks are carried out during pregnancy.

(i) Urine test

[2]

(ii) Blood pressure check

[2]

(c) Describe the role of the midwife during birth.

[2]



4 (a) Describe the following:

(i) Ventouse extraction during birth

[2]

(ii) Caesarean birth

[3]

(b) Describe what happens during Stage 1 of labour.

[3]

(c) Discuss the role of grandparents in the family.

[3]

[Turn over



5 (a) Kate and Michael are expecting their second baby. Assess how having the baby may affect their family life.

1. _____

2. _____

3. _____

_____ [6]

(b) Write down **two** ways to help prevent sudden infant death syndrome (SIDS).

1. _____

2. _____ [2]

(c) Explain **two** points to consider when choosing clothes for a newborn baby.

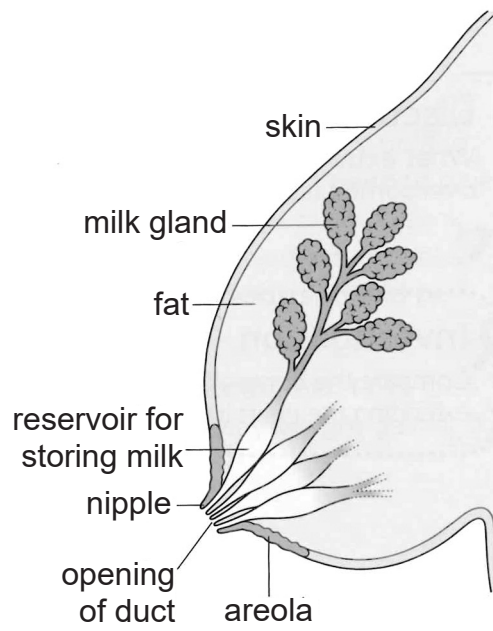
1. _____

2. _____

_____ [4]



6 (a) Explain how breastfeeding works.



Source: *Child Care and Development 7th Edition* by Pamela Minett (9781471899768) 2017.
© Hodder and Stoughton Educational Limited. "Reproduced with permission of the Licensor through PLSclear."

[3]



The quality of your written communication will be assessed in this question.

8 Sophie is three months pregnant.

Discuss the suitability of this breakfast for Sophie, in line with current government nutritional advice.

Porridge, made with semi-skimmed milk



© Getty Images

Poached egg on white toast



© Getty Images

Strawberry smoothie



© Getty Images

[Turn over





THIS IS THE END OF THE QUESTION PAPER

BLANK PAGE

DO NOT WRITE ON THIS PAGE

12541.02 R



16GCD1115

DO NOT WRITE ON THIS PAGE

For Examiner's use only	
Question Number	Marks
1	
2	
3	
4	
5	
6	
7	
8	

Total Marks	
--------------------	--

Examiner Number

Permission to reproduce all copyright material has been applied for.
In some cases, efforts to contact copyright holders may have been unsuccessful and CCEA will be happy to rectify any omissions of acknowledgement in future if notified.

12541.02 R



16GCD1116